



QI MAI COMPRESSOR(SHANGHAI)CO.,LTD.

Add: No.298 Jinchi Road, Baoshan District, Shanghai, China

Tel: 86-21-67250166

Mob: 86-15921181322 (WhatsApp&WeChat)

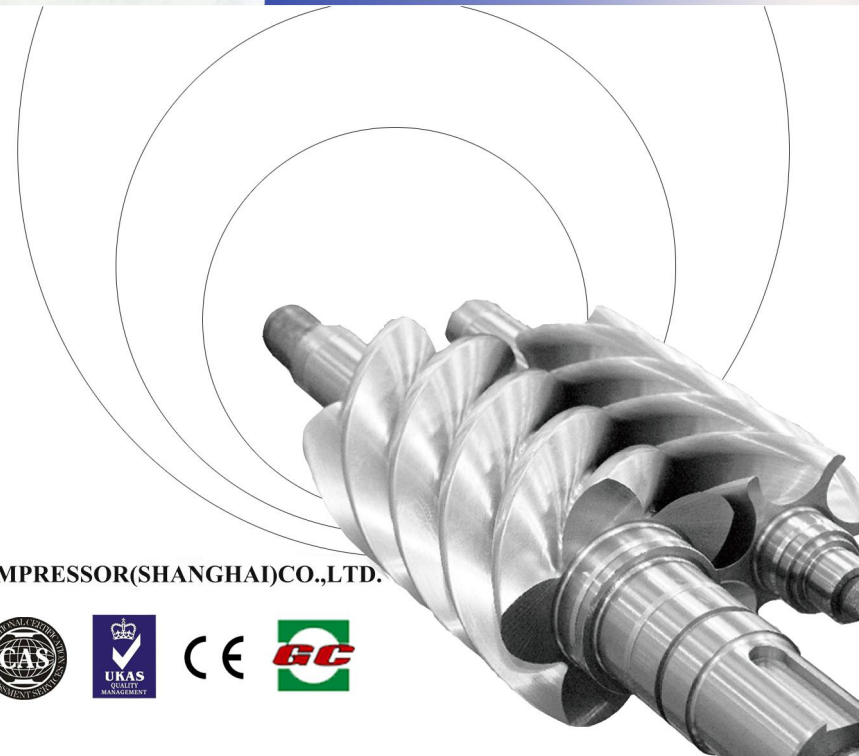
Fax: 86-21-67251813

Email: ylyapu@sina.com

Web: <http://www.chmairss.com>



CHMAIRSS SCREW AIR COMPRESSOR



QI MAI COMPRESSOR(SHANGHAI)CO.,LTD.





ABOUT US

QI MAI COMPRESSOR(SHANGHAI)CO.,LTD.

Air system expert and industry leader in China that focus on rotary screw compressor R&D, manufacturing, sales and service.QI MAI factory covers an area of 110,000 square meters, ISO9001 and CE certified to assure the highest quality standards in manufacturing.QI MAI always insists on technology innovation , quality first, and regards these as the base of its survival in the competitive market.

As large-scale manufacturer,QI MAI has advanced management system and complete facilities for design, manufacturing , inspection, measurement and test system. With the advantage location at Shanghai , and manufacturing based in China,QI MAI always supplies the most competitive products with superexcellent quality, with dynamic and professional sales team,QI MAI compressors have been actively selling to all over the world, and achieved a trusted name in rotary screw compressor industry.



ISO9001



ISO14001



CE



Shanghai Famous Trademark

EQUIPMENTS FOR AIR END BUILDING



**AIR SYSTEM EXPERT
MASTER THE CORE TECHNOLOGY**

LOW NOISE

LESS MAINTENANCE

LOW ENERGY CONSUMPTION



Third generation U type air end
CK45 steel, original world-renowned bearings
European leading technology, advanced design concept
5:6 male and female helical rotors
High precision 0.02-0.035mm working clearance between rotor gears
Large rotors and large bearings to ensure low speed
Outstanding durability and long serving life



Germany LEITZ three coordinate measuring instrument



Germany DMG rotors process line



Japan NIIGATA for the process of rotors housing

• High performance • Energy saving • Reliability • Outstanding durability

ENERGY CONSERVATION AND ENVIRONMENT PROTECTION

LOW RUNNING COST



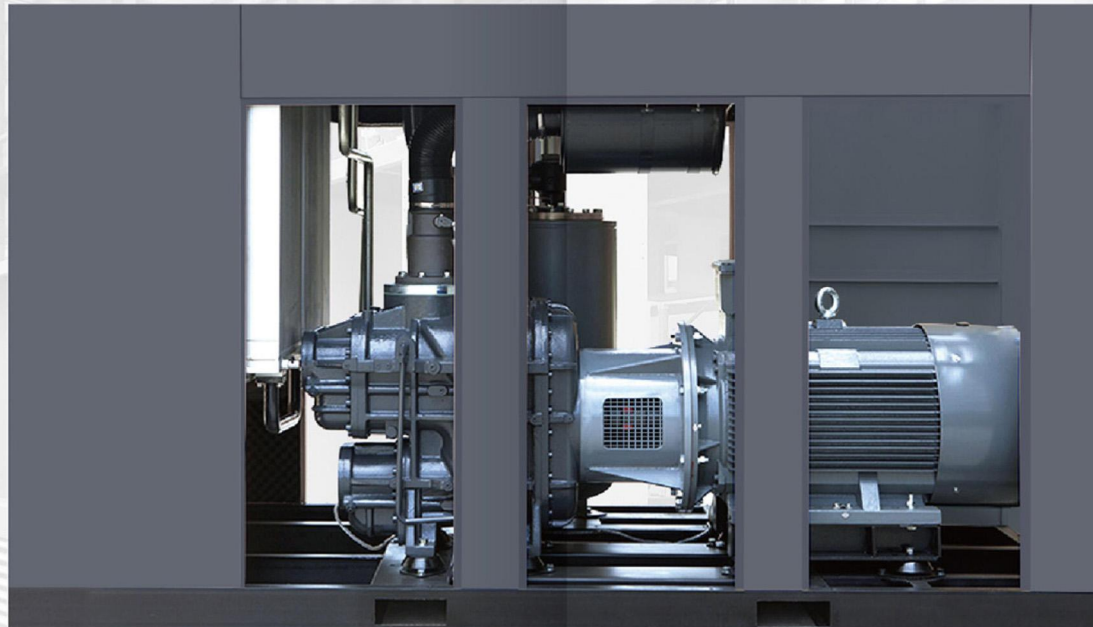
FILTER SYSTEM

Loftoll oil filter,
Loftoll air filter
Loftoll and oil separator
Equipped with differential pressure transducer,
Automatic reminding for maintenance and replacement



INTAKE VALVE

Advance air flow control system
Air delivery adjustment range 0-100%
Balance air supply and air consumption
Energy saving



INVERTER

High vector frequency converter
Maximize energy efficiency



INTELLIGENT CONTROLLER

Touch screen operation
Intelligent human-computer interface
Automatic trouble diagnosis
Automatic alarm
Equipped with remote control



AIREND (Two-stage)

European leading technology, advanced design concept
Large rotors and large bearings to ensure low speed
Linear screw rotor
Third generation 5:6 male and female helical rotors
Original world-renowned bearings
High performance, low noise, low vibration
Outstanding durability and long serving life



MOTOR

High efficiency
Energy saving
Insulation grade F
Protection grade IP54
Reliable and long lasting durability

MODELS AND SPECIFICATIONS



Less Maintenance



DIRECT DRIVEN SCREW COMPRESSOR

Model	Power kw	Discharge / Pressure (m ³ /min)/Bar				Noise dB(A)	Outlet connector	Weight kg	Dimension LxWxH (mm)
B-10A	7.5	1.1/7	1.0/8	0.9/10	0.8/12	62±2	G3/4"	190	850x750x880
G-15A	11	1.7/7	1.6/8	1.3/10	1.1/12	63±2	G1"	280	1150x750x1000
G-20A	15	2.5/7	2.4/8	2.1/10	1.9/12	63±2	G1"	290	1150x750x1000
G-25A	18.5	3.2/7	3.0/8	2.6/10	2.2/12	63±2	G1 1/4"	390	1250x800x1130
G-30A	22	3.8/7	3.6/8	3.2/10	2.8/12	63±2	G1 1/4"	420	1250x800x1130
G-40A	30	5.2/7	5.0/8	4.5/10	3.8/12	63±2	G1 1/2"	460	1250x800x1130
G-50A	37	6.8/7	6.2/8	5.6/10	4.9/12	63±2	G1 1/2"	590	1350x950x1250
G-60A	45	7.3/7	7.0/8	6.0/10	5.6/12	68±2	G1 1/2"	720	1350x950x1250
G-75A	55	10.8/7	10.1/8	9.0/10	8.5/12	72±2	G2"	1320	2020x1300x1600
G-100A	75	13.5/7	12.6/8	11.2/10	10.0/12	72±2	G2"	1410	2020x1300x1600
G-120A	90	16.5/7	15.5/8	13.8/10	12.3/12	75±2	DN65	1620	3200x1550*1800
G-150A	110	21.5/7	20.5/8	17.5/10	16.2/12	75±2	DN65	1680	3200x1550x1800
G-175A	132	26.2/7	25.0/8	22.0/10	20.5/12	75±2	DN80	1740	3200x1550x1800
G-200A	160	28.7/7	27.6/8	24.6/10	21.5/12	78±2	DN80	2170	3500x1650x2000
G-250A	185	32.0/7	30.5/8	27.5/10	24.8/12	78±2	DN80	2490	3500x1650x2000
G-300A	220	36.7/7	34.5/8	30.2/10	27.8/12	78±2	DN80	3360	3900x1850x2130
G-350A	250	43.5/7	42.5/8	40.1/10	34.6/12	78±2	DN80	3780	3900x1850x2130
G-425A	315	58.0/7	56.0/8	50.0/10	42.0/12	84±2	DN125	4910	4300x2000x2420

Note: B-10A is belt driven
Water cooling available

Variable Frequency
Energy Saving



VSD DIRECT DRIVEN SCREW COMPRESSOR

Model	Power kw	Discharge / Pressure (m ³ /min)/Bar				Noise dB(A)	Outlet connector	Weight kg	Dimension LxWxH (mm)
VG-15A	11	1.7/7	1.6/8	1.3/10	1.1/12	63±2	G1"	330	1100x750x1050
VG-20A	15	2.5/7	2.4/8	2.1/10	1.9/12	63±2	G1"	350	1100x750x1050
VG-25A	18.5	3.2/7	3.0/8	2.6/10	2.2/12	63±2	G1 1/4"	480	1550x820x1180
VG-30A	22	3.8/7	3.6/8	3.2/10	2.8/12	63±2	G1 1/4"	490	1550x820x1180
VG-40A	30	5.2/7	5.0/8	4.5/10	3.8/12	63±2	G1 1/4"	550	1600x950x1280
VG-50A	37	6.8/7	6.2/8	5.6/10	4.9/12	63±2	G1 1/4"	680	1600x950x1280
VG-60A	45	7.3/7	7.0/8	6.0/10	5.6/12	68±2	G1 1/2"	750	1600x1050x1360
VG-75A	55	10.8/7	10.1/8	9.0/10	8.5/12	72±2	G2"	1470	2020x1300x1600
VG-100A	75	13.5/7	12.6/8	11.2/10	10.0/12	72±2	G2"	1560	2020x1300x1600
VG-120A	90	16.5/7	15.5/8	13.8/10	12.3/12	75±2	DN65	1670	3200*1550*1800
VG-150A	110	21.5/7	20.5/8	17.5/10	16.2/12	75±2	DN65	1730	3200x1550x1800
VG-175A	132	26.2/7	25.0/8	22.0/10	20.5/12	75±2	DN65	1790	3200x1550x1800
VG-200A	160	28.7/7	27.6/8	24.6/10	21.5/12	78±2	DN80	2230	3500x1650x2000
VG-250A	185	32.0/7	30.5/8	27.5/10	24.8/12	78±2	DN80	2550	3500x1650x2000
VG-300A	220	36.7/7	34.5/8	30.2/10	27.8/12	78±2	DN80	3430	3900x1850x2130
VG-350A	250	43.5/7	42.5/8	40.1/10	34.6/12	78±2	DN80	3850	3900x1850x2130
VG-425A	315	58.0/7	56.0/8	50.0/10	42.0/12	84±2	DN125	5060	4300x2000x2420

Note: Water cooling available

LET'S
SAVE THE
WORLD
 TOGETHER

**PM & Inverter
 Screw Compressor**



PERMANENT MAGNET & INVERTER COMPRESSOR

Model	Power kw	Discharge / Pressure (m ³ /min)/Bar		Noise dB(A)	Outlet connector	Weight kg	Dimension LxWxH (mm)
VGS-15A	11	1.8/8	1.4/10	63±2	1"	310	1050*750*930
VGS-20A	15	2.6/8	2.2/10	63±2	1"	320	1050*750*930
VGS-25A	18.5	3.1/8	2.7/10	63±2	1 1/4"	410	1250*800*1130
VGS-30A	22	3.8/8	3.4/10	63±2	1 1/4"	430	1250*800*1130
VGS-40A	30	5.2/8	4.7/10	63±2	1 1/4"	450	1250*800*1130
VGS-50A	37	6.5/8	5.8/10	68±2	1 1/2"	630	1350*950*1250
VGS-60A	45	7.6/8	6.5/10	68±2	1 1/2"	750	1350*950*1250
VGS-75A	55	10.3/8	9.3/10	72±2	2"	1370	2020*1300*1600
VGS-100A	75	12.8/8	11.5/10	72±2	2"	1460	2020*1300*1600



TWO-STAGE SCREW COMPRESSOR

Model	Power kw	Discharge / Pressure (m ³ /min)/Bar		Noise dB(A)	Outlet connector	Weight kg	Dimension LxWxH (mm)
D-30A	22	4.1/8	3.5/10	65±2	G1 1/4"	620	1550x820x1180
D-40A	30	6.7/8	4.3/10	65±2	G1 1/2"	650	1600x950x1280
D-50A	37	7.1/8	6.2/10	68±2	G1 1/2"	980	1600x950x1280
D-60A	45	9.7/8	7.3/10	68±2	G2"	2100	2020x1300x1600
D-75A	55	12.1/8	9.6/10	72±2	G2"	2200	2020x1300x1600
D-100A	75	15.6/8	13.8/10	72±2	DN65	2700	2250x1400x1830
D-120A	90	19.4/8	15.2/10	72±2	DN65	2900	2250x1400x1830
D-150A	110	24.3/8	22.1/10	72±2	DN65	3900	3200x1550x1800
D-175A	132	27.7/8	23.5/10	75±2	DN80	4400	3500x1650x2000
D-200A	160	33.9/8	30.2/10	75±2	DN80	5400	3500x1650x2000
D-250A	185	40.1/8	33.1/10	85±2	DN80	6100	3900x1850x2130
D-270A	200	42.6/8	39.5/10	85±2	DN80	6200	3900x1850x2130
D-300A	220	45.5/8	41.2/10	85±2	DN100	6800	4000x2000x2200
D-350A	250	50.2/8	45.1/10	85±2	DN100	7500	4000x2000x2200

MODELS AND SPECIFICATIONS



TWO-STAGE WITH INVERTER COMPRESSOR

Model	Power kw	Discharge / Pressure (m ³ /min)/Bar		Noise dB(A)	Outlet connector	Weight kg	Dimension LxWxH (mm)
VD-30A	22	4.1/8	3.5/10	65±2	G1 1/4"	670	1550x820x1180
VD-40A	30	6.7/8	4.3/10	65±2	G1 1/2"	690	1600x950x1280
VD-50A	37	7.1/8	6.2/10	68±2	G1 1/2"	1100	1600x950x1280
VD-60A	45	9.7/8	7.3/10	68±2	G2"	2200	2020x1300x1600
VD-75A	55	12.1/8	9.6/10	72±2	G2"	2300	2020x1300x1600
VD-100A	75	15.6/8	13.8/10	72±2	DN65	2800	2250x1400x1830
VD-120A	90	19.4/8	15.2/10	72±2	DN65	3000	2250x1400x1830
VD-150A	110	24.3/8	22.1/10	72±2	DN65	4000	3200x1550x1800
VD-175A	132	27.7/8	23.5/10	75±2	DN80	4500	3500x1650x2000
VD-200A	160	33.9/8	30.2/10	75±2	DN80	5500	3500x1650x2000
VD-250A	185	40.1/8	33.1/10	85±2	DN80	6200	3900x1850x2130
VD-270A	200	42.6/8	39.5/10	85±2	DN80	6300	3900x1850x2130
VD-300A	220	45.5/8	41.2/10	85±2	DN100	6800	4000x2000x2200
VD-350A	250	50.2/8	45.1/10	85±2	DN100	7500	4000x2000x2200



TWO-STAGE WITH PERMANENT MAGNET & INVERTER COMPRESSOR

Model	Power kw	Discharge / Pressure (m ³ /min)/Bar		Noise dB(A)	Outlet connector	Weight kg	Dimension LxWxH (mm)
VDS-30A	22	4.1/8	3.5/10	65±2	G1 1/4"	670	1550x820x1180
VDS-40A	30	6.7/8	4.3/10	65±2	G1 1/2"	710	1600x950x1280
VDS-50A	37	7.1/8	6.2/10	68±2	G1 1/2"	1150	1600x950x1280
VDS-60A	45	9.7/8	7.3/10	68±2	G2"	2100	2020x1300x1600
VDS-75A	55	12.1/8	9.6/10	72±2	G2"	2200	2020x1300x1600
VDS-100A	75	15.6/8	13.8/10	72±2	DN65	2700	2250x1400x1830
VDS-120A	90	19.4/8	15.2/10	72±2	DN65	2900	2250x1400x1830
VDS-150A	110	24.3/8	22.1/10	72±2	DN65	3900	3200x1550x1800
VDS-175A	132	27.7/8	23.5/10	75±2	DN80	4400	3500x1650x2000
VDS-200A	160	33.9/8	30.2/10	75±2	DN80	5400	3500x1650x2000
VDS-250A	185	40.1/8	33.1/10	85±2	DN80	6100	3900x1850x2130
VDS-270A	200	42.6/8	39.5/10	85±2	DN80	6200	3900x1850x2130
VDS-300A	220	45.5/8	41.2/10	85±2	DN100	6800	4000x2000x2200
VDS-350A	250	50.2/8	45.1/10	85±2	DN100	7500	4000x2000x2200

MODELS AND SPECIFICATIONS



REFRIGERATED AIR DRYER

Model	Capacity m ³ /min	Outlet connector	Weight kg	Dimension LxWxH (mm)
QHC-10A	1.2	G1"	60	430x650x690
QHC-15A	1.7	G1"	60	430x650x690
QHC-20A	2.6	G1"	65	450x750x790
QHC-30A	3.8	G1-1/2"	80	450x700x920
QHC-40A	5.3	G1-1/2"	105	500x850x970
QHC-50A	6.6	G2"	135	500x850x970
QHC-60A	7.4	G2"	185	560x900x1070
QHC-75A	10.3	G2"	195	670x1180x1160
QHC-100A	13.5	G2"	225	670x1180x1160
QHC-120A	16.2	G2"	260	670x1180x1160
QHC-150A	21.6	DN80	326	1360x710x1205
QHC-175A	25.2	DN80	433	1360x710x1205
QHC-200A	28.3	DN80	469	1360x710x1205
QHC-300A	36	DN80	520	1650x970x1422
QHC-400A	45	DN100	630	1650x970x1422

Note: 1.2 - 300m³/min available
Water cooling available

PRECISION FILTER

Model	Capacity m ³ /min	Outlet connector	Weight kg	Dimension WxH (mm)
QPF-1	1	G1"	1.5	105x240
QPF-2	2	G1"	1.9	105x280
QPF-4	4	G1-1/2"	2.3	123x350
QPF-5	5	G1-1/2"	2.5	123x480
QPF-7	7	G1-1/2"	2.6	123x480
QPF-10	10	G2"	3.7	135x605
QPF-13	13	G2"	3.8	135x605
QPF-18	18	G2-1/2"	12.5	150x915
QPF-22	22	G2-1/2"	12.8	150x915
QPF-25	25	G2-1/2"	13.9	150x1010
QPF-30	30	DN80	35	360x1225
QPF-40	40	DN80	75	410x1325
QPF-45	45	DN100	81	410x1335
QPF-60	60	DN125	118	520x1361
QPF-88	88	DN125	153	545x1530

Note: 1 - 300m³/min available



AIR RECEIVER

Volume / Pressure (m ³ /Bar)	Overall Height H1(mm)	ID (mm)	Air Inlet		Air Outlet		Safety Valve connector	Drain Valve connector
			Height H2(mm)	connector	Height H3(mm)	connector		
0.3 / 8	1594	550	642	Rp1 1/2	1242	Rp1 1/2	Rp3/4	Rp1/2
0.3 / 10	1594		642		1242			
0.3 / 13	1598		644		1244			
0.3 / 16	1598	700	644	Rp1 1/2	1244	Rp1 1/2	Rp3/4	Rp1/2
0.6 / 8	1905		680		1550			
0.6 / 10	1907		681		1551			
0.6 / 13	1909	800	682	Rp1 1/2	1552	Rp1	Rp1/2	
0.6 / 16	1907		681		1551			
1.0 / 8	2305		590		1920			
1.0 / 10	2307	1000	691	Rp1 1/2	1921	Rp1	Rp1/2	
1.0 / 13	2305		690		1920			
1.0 / 16	2307		691		1921			
1.5 / 8	2270	1000	760	Rp2	1810	Rp1	Rp1/2	
1.5 / 10	2270		760		1810			
1.5 / 13	2272		761		1811			
1.5 / 16	2566	1000	753	Rp2	2118	Rp1 1/4	Rp1/2	
2.0 / 8	2780		760		2320			
2.0 / 10	2780		761		2321			
2.0 / 13	2782	1200	760	DN80	2321	DN80	Rp1 1/2	
2.0 / 16	2786		763		2323			
2.5 / 8	3300		760		2840			
2.5 / 10	3300	1000	760	DN80	2840	Rp1 1/4	Rp1/2	
2.5 / 13	3302		761		2840			
2.5 / 16	2836		788		2841			
3.0 / 8	2920	1200	850	DN80	2410	DN80	Rp1 1/2	
3.0 / 10	2922		851		2411			
3.0 / 13	2926		853		2413			
3.0 / 16	2926	1400	853	DN100	2413	Rp1 1/2	Rp3/4	
4.0 / 8	3032		911		2471			
4.0 / 10	3032		911		2471			
4.0 / 13	3036	1400	913	DN100	2473	Rp1 1/2	Rp3/4	
4.0 / 16	3040		915		2475			
5.0 / 8	3702		911		2991			
5.0 / 10	3702	1400	911	DN100	2991	DN100	Rp2	Rp3/4
5.0 / 13	3726		913		3013			
5.0 / 16	3730		915		3015			
6.0 / 8	4332	1400	911	DN125	3621	DN125	Rp2	Rp3/4
6.0 / 10	4332		911		3621			
6.0 / 13	4346		913		3633			
6.0 / 16	4350	2000	915	DN125	3635	DN125	Rp2	Rp3/4
8.0 / 8	3154		1082		2362			
8.0 / 10	3156		1083		2363			
8.0 / 13	3190	2000	1100	DN125	2380	DN125	Rp2	Rp3/4
8.0 / 16	3194		1102		2382			
10.0 / 8	3754		1082		2962			
10.0 / 10	3756	2000	1083	DN150	2963	DN150	Rp2 1/2	Rp3/4
10.0 / 13	3790		1100		2980			
10.0 / 16	3794		1102		2982			

Note: 0.3-40m³ available

Air Receiver Drawing

